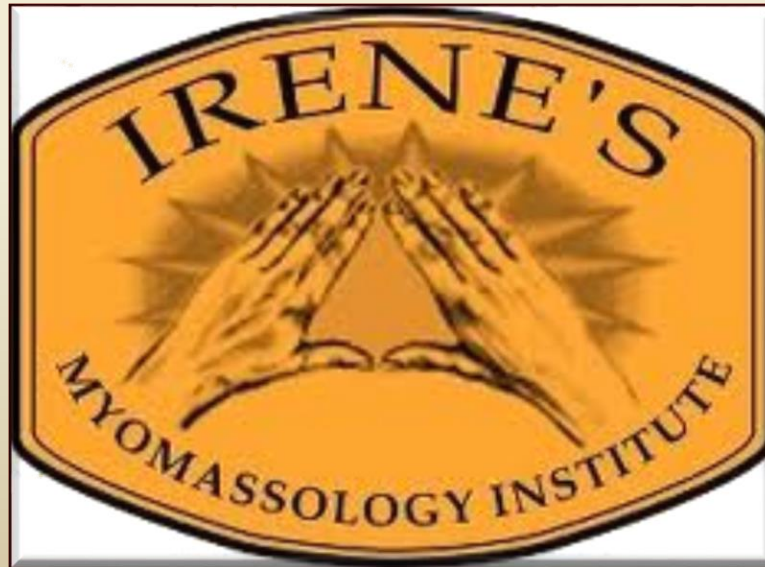


# Instructor's Review for Final Exams

---



## Contraindications for Massage





# Malignant Tumors



**Malignant Tumor**: a tumor that invades surrounding tissues, is usually capable of producing metastases, may recur after attempted removal, and is likely to cause death of the host unless adequately treated..



# Neoplasia



**Neoplasia** - New growth. Abnormal multiplication of cells.

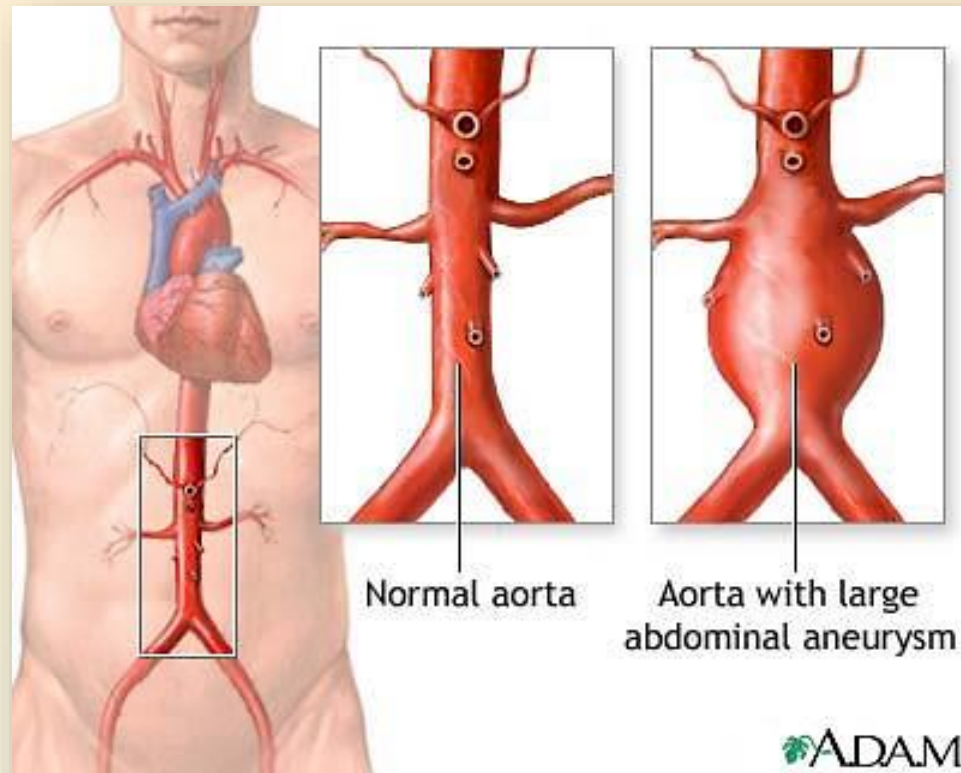
# Acute Inflammation of a Joint



**acute inflammation:** any inflammation that has a fairly rapid onset, quickly becomes severe, usually manifested for only a few days, but may persist for several days or even a few weeks.



# Aneurysm



**Aneurysm** - Circumscribed dilation of an artery connecting directly with the lumen of an artery or a cardiac chamber connecting directly with the lumen of an artery, usually due to an acquired or congenital weakness of the wall of the artery or chamber.

# Carcinoma, Melanoma, Sarcoma

**Carcinoma** - Any of the various types of malignant neoplasm derived from epithelial tissue in several sites, occurring more frequently in the skin and large intestine in both sexes, the lung and prostate gland in men, and the lung and breast in women. Carcinomas are identified histologically.

**Melanoma** - A malignant neoplasm, derived from cells that are capable of forming melanin, arising most commonly in the skin of any part of the body, or in the eye,

**Sarcoma** - A connective tissue neoplasm, usually highly malignant, formed by proliferation of mesodermal cells.





# Contraindication for Ice



Raynaud's Disease



Previous frostbite  
in area.



# Acute Infections and Inflammation Conditions



Acute infections and inflammation conditions





# Torn Soft Tissue



Torn Thigh Muscle



# Edema



**Edema** caused by kidney or congestive heart disease (pitting edema).



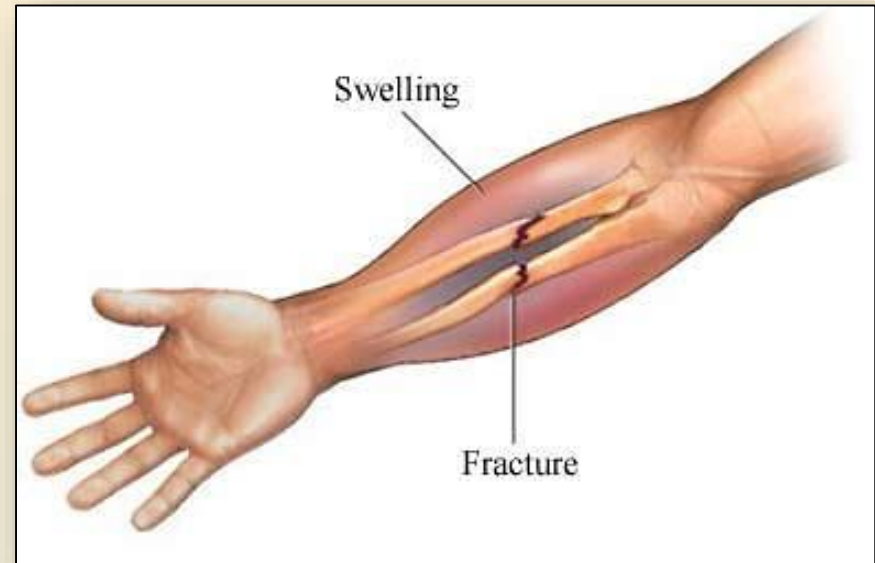
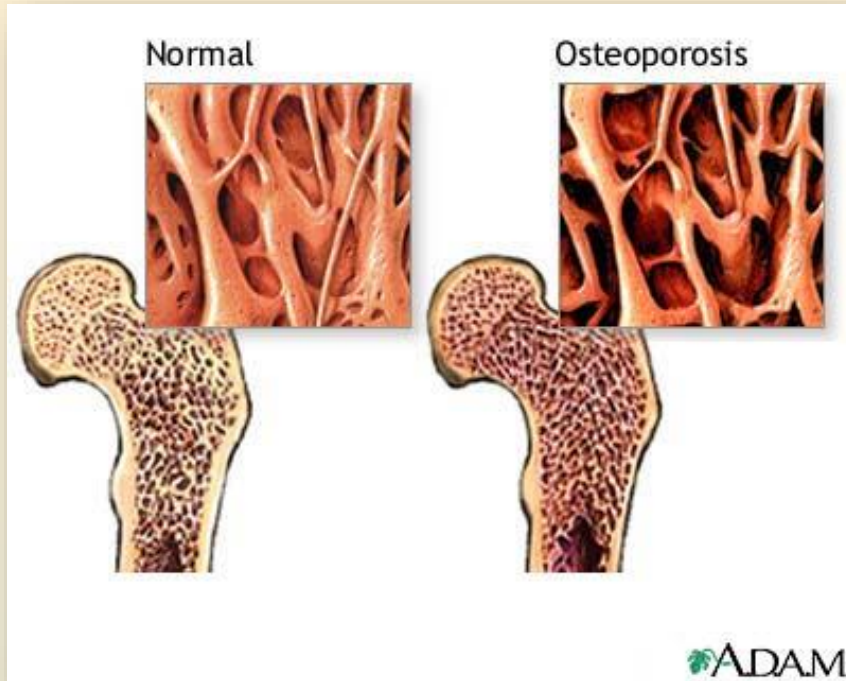
# Contagious Skin Diseases



Contagious skin diseases, open wounds.



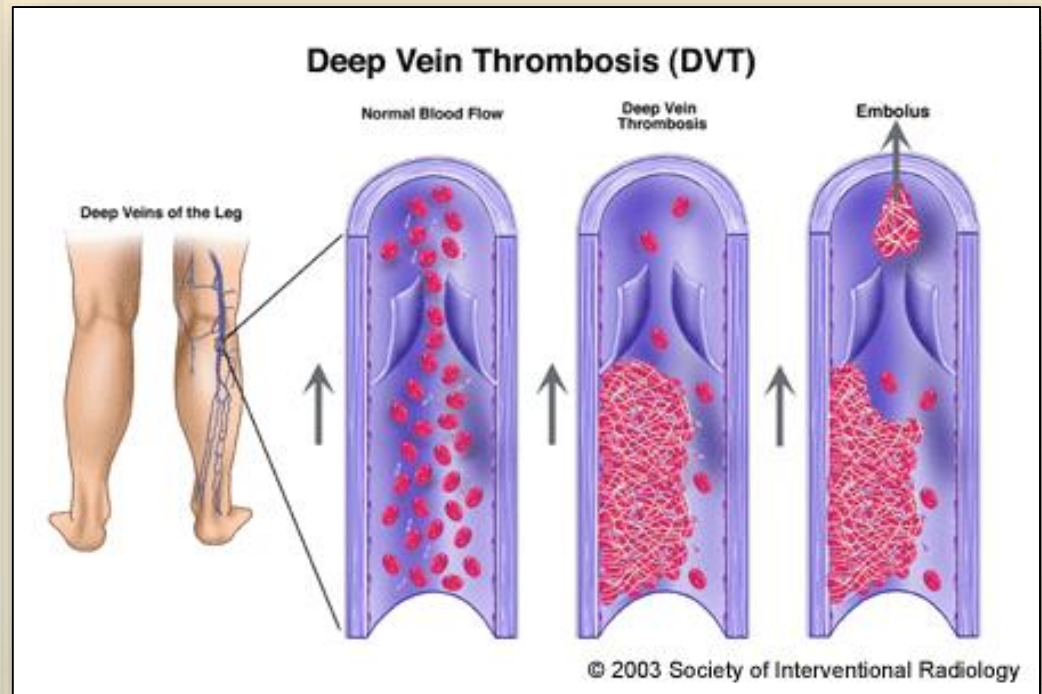
# Severe Osteoporosis



Severe osteoporosis or unhealed broken bones.



# Severe Varicose Veins



Severe varicose veins and blood clots (deep vein thrombosis – DVT).

# **MBLX Review**

## **Plain & Simple Guide to Therapeutic Massage & Bodywork Examinations**

### **The Cardiovascular System**

# General Review

1. The body's main line of defense against infection or illness are the \_\_\_\_\_.

a. Erythrocytes

b. Leukocytes

c. Fibrinogens

d. Hematites

# General Review

2. There are \_\_\_\_\_ different blood types.

a. 8

b. 6

c. 9

d. 5



# General Review

3. The largest artery in the body is the \_\_\_\_\_.
- a. Jugular vein
  - b. Subclavian
  - c. Aorta
  - d. Thrombus

# General Review

4. The smallest blood vessels that carry oxygenated blood are the \_\_\_\_\_.

- a. Varicose veins
- b. Brachial arteries
- c. Capillaries
- d. Coronary arteries

# General Review

5. A complete shutdown of the heart is a \_\_\_\_\_.
- a. Cardiac arrest
  - b. Cardiovascular episode
  - c. Mitral valve prolapse
  - d. CVA

# General Review

6. A genetic condition that results in a lack of clotting factors in the blood is \_\_\_\_\_.

- a. Hypochondria
- b. Sickle cell anemia
- c. Hyperion anemia
- d. Hemophilia

# General Review

7. Hypertension is the condition of \_\_\_\_\_.
- a. Attention deficit disorder
  - b. Low blood pressure
  - c. Heart murmur
  - d. High blood pressure

# General Review

8. An excessively rapid heartbeat is known as \_\_\_\_\_.
- a. Nascardia
  - b. Brachycardia
  - c. Angina
  - d. Tachycardia

# General Review

9. A progressive narrowing and hardening of the arteries caused by age, high cholesterol levels, smoking, and/or other factors is called \_\_\_\_\_.

a. Cerebrovascular accident

b. Cyanosis

c. Atherosclerosis

d. Scleroderma

# General Review

10. An inflammation of the veins is called \_\_\_\_\_.
- a. Varicose veins
  - b. Necrosis
  - c. Phlebitis
  - d. Bursitis



# General Review

11. Blood type classification is based on the presence or absence of \_\_\_\_\_.

a. AHO antigens

b. TBA antigens

c. ABO antigens

d. HBO antigens

# General Review

12. The great vessels are the \_\_\_\_\_ superior to the aortic arch.

a. 3

b. 4

c. 5

d. 6

# General Review

13. \_\_\_\_\_ is the force that circulating blood exerts on the artery walls.

a. Cardiac output

b. Systole

c. Diastole

d. Blood pressure

# General Review

14. The condition that is caused by a lack of vitamin B is \_\_\_\_\_.

a. Pernicious anemia

b. Raynaud disease

c. Hypoxia

# General Review

15. The \_\_\_\_\_ is the cavity in a blood vessel through which the blood flows.

a. Myocardium

b. Lumen

c. Sinoatrial node

d. Venule